



WOMETECH





## // ABOUT US

THE WOMET.TECH BRAND WAS BORN IN 2003. TILL THIS DAY, THE COMPANY KEEPS ALIVE THE FAMILY TRADITION OF METALWORKING WHICH IN THEIR CASE, DATES BACK TO 1980.

— — — — —

THE IDEA OF MANUFACTURING MOTORCYCLE ACCESSORIES AROSE IN 2001, WHEN THE COMPANY FOUNDER AND OWNER STARTED TO CREATE FIRST PROTECTIVE COMPONENTS FOR HIS OWN MOTORCYCLE.

METALWORKING EXPERIENCE AND PROFESSIONAL APPROACH, COMBINED WITH KNOWLEDGE AND COMMITMENT RESULTING FROM PERSONAL INTEREST IN MOTORCYCLE RACING ENABLED HIM TO CREATE PRODUCTS WHICH WERE SOON WELL RECEIVED AND APPRECIATED WITHIN THE MOTORCYCLE COMMUNITY.

---

## PRECISION ENABLING PERFORMANCE

## // QUALITY AND TEAM COMMITMENT

WE UNDERSTAND THE EXPECTATIONS OF MOTORCYCLE OWNERS AS WE SHARE THE SAME PASSION WITH OUR CLIENTS. AT WOMET.TECH, WE CREATE COMPONENTS WHICH WE WOULD PROUDLY PRESENT ON OUR OWN MOTORCYCLES. PRECISION OF MANUFACTURING AND QUALITY OF MATERIALS USED, RESULTED IN OUR PRODUCTS GAINING APPRECIATION OF BOTH PROFESSIONALS AND MOTORCYCLE ENTHUSIASTS ALL OVER THE WORLD.

WE ARE A FAMILY BUSINESS COMMITTED TO SUSTAINABLE DEVELOPMENT OF OUR REGION. PRODUCTION IN POLAND IS OUR VALUE AND PRIDE, ALLOWING US TO CONSISTENTLY INCREASE THE QUALITY OF WOMET.TECH COMPONENTS.



## **// PROJECTS/PROTECTION AND AESTHETICS/DESIGN**

WHEN WORKING ON ANY COMPONENT IMPLEMENTED FOR PRODUCTION, WE FOLLOW ONE RULE: OPTICAL TECHNICAL PARAMETERS, ERGONOMICS AND AESTHETICS HAVE TO GO HAND IN HAND. OUR PRODUCTS ARE ARMOUR AND JEWELLERY AT THE SAME TIME – WE WANT THEM NOT ONLY TO PROTECT THE MACHINES, BUT ALSO EMPHASISE THE BEAUTY AND STYLE OF EVERY MOTORCYCLE.

## **// TESTED BY PROFESSIONALS**

WE'VE BEEN COLLABORATING WITH PROFESSIONAL RACE TEAMS FOR NEARLY 10 YEARS. WOMET.TECH COMPONENTS ARE TESTED ON RACE TRACKS BY LEADING COMPETITORS. TESTS PASSED IN EXTREME CONDITIONS WHERE EVERY DETAIL MATTERS, ENSURE THAT OUR PRODUCTS WILL FULFIL THE HIGHEST EXPECTATIONS OF OUR CUSTOMERS.



WOMET.TECH







## // REBRANDING/NEW LOGO

IN 2018 WOMET.TECH HAS UNDERGONE A REBRANDING EXERCISE. WE CONDUCTED A COMPREHENSIVE REBRANDING, REFRESHING OUR LOGO AND OTHER ELEMENTS OF OUR BRAND IDENTITY. OUR GOAL WAS TO CREATE AN IDENTITY THAT REFLECTS THE COMPANY'S CURRENT MARKET POSITION AND ITS FUTURE DEVELOPMENT PLANS.



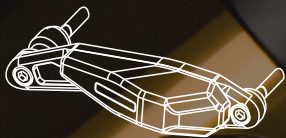




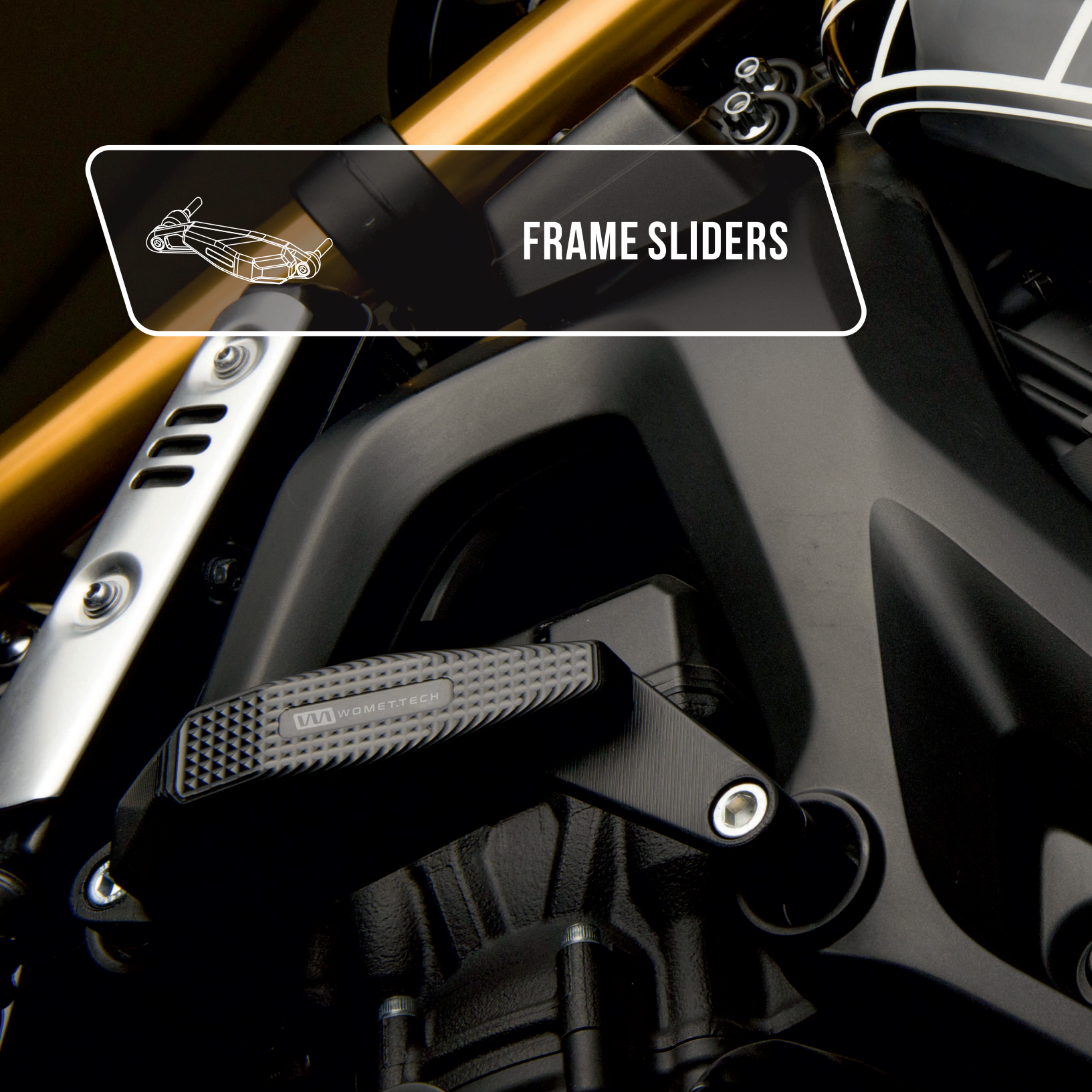


# INDEX

// FRAME SLIDERS	12
// FRONT AXLE SLIDERS	18
// ENGINE SLIDERS	20
// REAR AXLE SLIDERS	24
// ENGINE CASE SAVERS	26
// DUCATI CLUTCH COVER	28
// BAR ENDS	30
// SWINGARM SPOOL SLIDERS	36
// CLUTCH/BRAKE LEVERS	40
// FORK PRELOAD ADJUSTERS	46
// CLIP-ON HANDLEBARS	48
// FUEL TANK CAPS	50
// BRAKE FLUID CAPS	52
// MIRROR COVERS	54
// SMOG BLOCK OFF PLATES	58
// FOOT PEG	60
// TOE GUARD	62
// OIL FILLER CAPS	64
// SWING ARM LIFTER	66



## FRAME SLIDERS



STRUCTURAL ELEMENT IN ALUMINUM MACHINED FROM BILLET

SLIDERS MADE OF SPECIAL HIGH-DENSITY  
POLYMER WHICH DISSIPATES IMPACT ENERGY

MODERN DESIGN

TWO-POINT MOUNTING DECREASING RISK OF ENGINE  
FASTENINGS DAMAGE DURING ROLLOVER TO MINIMUM

MATERIAL: ALUMINUM 6082 / HIGH DENSITY POLYMER / STEEL BOLT



## // ENDURANCE RACE

SLIDERS MADE OF SPECIAL HIGH-DENSITY  
POLYMER WHICH DISSIPATES IMPACT ENERGY

MACHINED FROM BILLET ALUMINUM

OFFER INCLUDES SLIDERS FOR OVER 150  
MODELS OF MOTORCYCLES



SPACERS USED PREVENT THE SET SCREW FROM LOOSENING

SET INCLUDES CAPS MASKING THE ASSEMBLY BOLTS  
AND PERFECTLY EMPHASISING THE UNIQUE STYLE

INTENDED FOR STREET AND RACE MOTORCYCLES

// RACE - COMPOSITE PROTECTORS ATTACHED WITH STEEL BOLTS DIRECTLY TO THE ENGINE.

MATERIAL: ALUMINUM 2011 / HIGH DENSITY POLYMER / STEEL BOLT

STRUCTURAL ELEMENT IN ALUMINUM  
MACHINED FROM BILLET

INTENDED FOR STREET AND RACE MOTORCYCLES

SET INCLUDES CAPS MASKING THE ASSEMBLY BOLTS  
AND PERFECTLY EMPHASISING THE UNIQUE STYLE

SPACERS USED PREVENT THE SET SCREW FROM LOOSENING

SLIDERS MADE OF SPECIAL HIGH-DENSITY  
POLYMER WHICH DISSIPATES IMPACT ENERGY



// EXTREME

WE TEAMED UP WITH OUR FRIENDS AT TST INDUSTRIES TO CREATE THESE HIGH QUALITY COMPONENTS.

COLORS



MACHINED FROM  
BILLET ALUMINUM

SPECIAL DESIGN ALLOWS YOU TO QUICKLY REPLACE  
THE COMPOSITE PROTECTOR WITHOUT HAVING  
TO DISASSEMBLE THE FIXING BASE

INTENDED FOR RACE MOTORCYCLES

RACING HOOKS ADAPTERS

SHORTER AND LIGHTER THAN ROAD EQUIVALENT

RACING HOOK ADAPTERS USEFUL FOR STRAPPING DOWN THE MOTORCYCLE DURING  
TRANSPORT. PRODUCT INSTALLED IN PLACE OF THE HIGH DENSITY POLYMER SLIDER.

MATERIAL: ALUMINUM 7075 / 6082 / HIGH DENSITY POLYMER / STEEL BOLT

## // SPARE PARTS

### ADAPTERS



### HIGHT DENSITY POLYMER SLIDERS COLORS



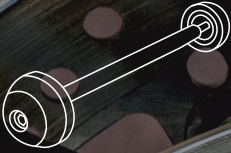
### BOLTS



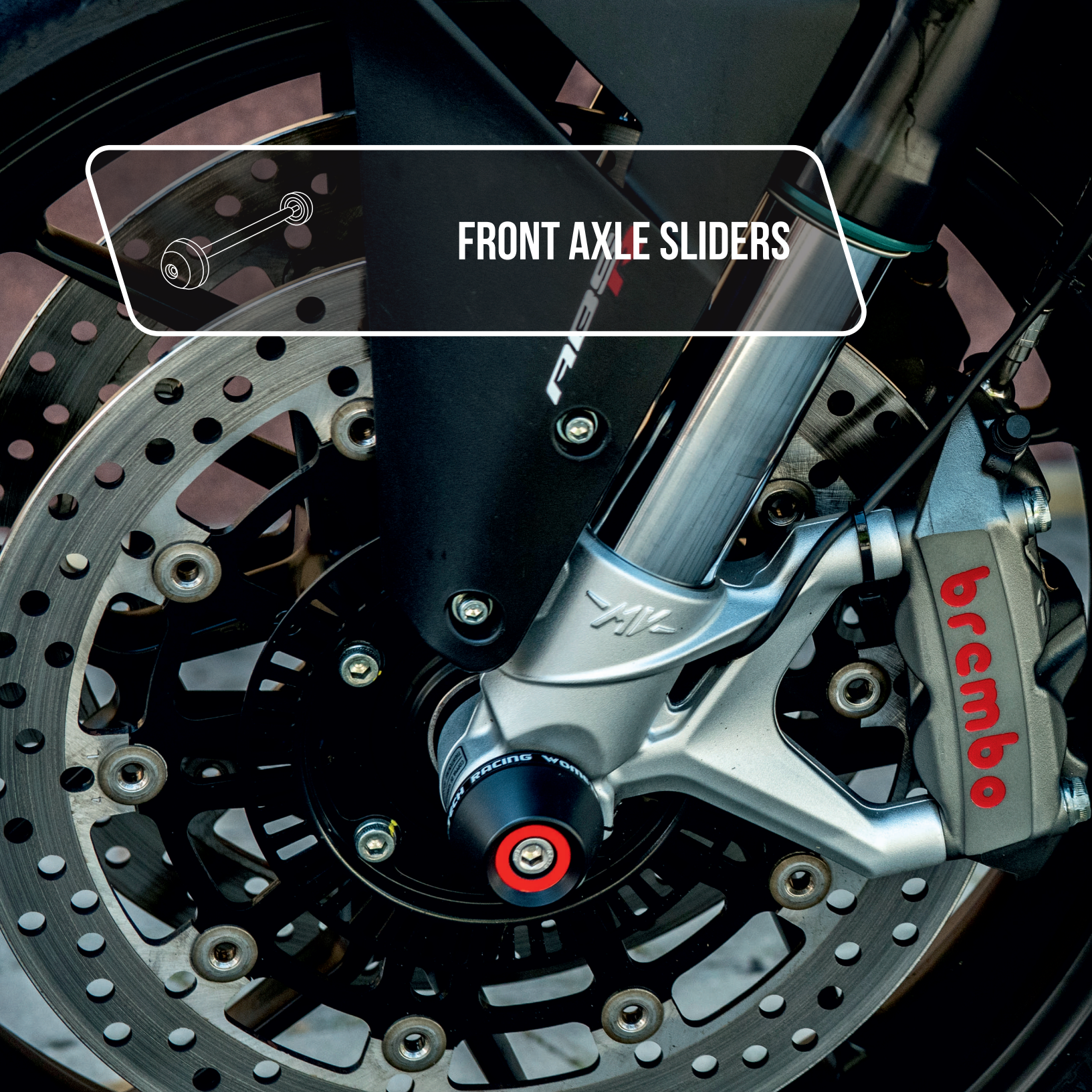
### SLIDER CAPS COLORS







## FRONT AXLE SLIDERS





RING COLORS



MADE OF SPECIAL HIGH-DENSITY POLYMER WHICH DISSIPATES IMPACT ENERGY,  
ENSURING PROTECTION OF FORK END COMPONENTS

FRONT AXLE SLIDERS

19



VERY SIMPLE ASSEMBLY

ALUMINUM ROD

FLUORESCENT RING INCREASING VEHICLE VISIBILITY  
IN DIFFICULT CONDITIONS AND DURING THE NIGHT

MATERIAL: ALUMINUM 2011 / HIGH DENSITY POLYMER / STAINLESS STEEL BOLT



## ENGINE SLIDERS





SLIDERS MADE OF SPECIAL HIGH-DENSITY  
POLYMER WHICH DISSIPATES IMPACT ENERGY,  
ENSURING PROTECTION OF ENGINE COMPONENTS

ASSEMBLY DOES NOT NEGATIVELY INFLUENCE  
BODY CLEARANCE DIMENSIONS



VERY EASY ASSEMBLY REPLACING  
THE ORIGINAL INSPECTION COVER

SET INCLUDES CAPS MASKING THE ASSEMBLY BOLTS  
AND PERFECTLY EMPHASISING THE UNIQUE STYLE

PRODUCED USING CNC TECHNOLOGY

MATERIAL / HIGH DENSITY POLYMER



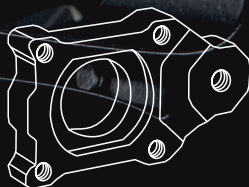












## REAR AXLE SLIDERS



FLUORESCENT RING INCREASING VEHICLE  
VISIBILITY IN DIFFICULT CONDITIONS AND DURING THE NIGHT

MACHINED FROM BILLET ALUMINUM

CAN BE OPTIONALLY USED AS  
SWING ARM ROLLER ADAPTERS

COLORS



REAR AXLE SLIDERS

25



ASSEMBLY DOES NOT REQUIRE ANY  
MODIFICATION OF THE MOTORCYCLE

ENABLING PRECISE ADJUSTMENT OF CHAIN TAUTNESS

SLIDERS MADE OF SPECIAL HIGH-DENSITY  
POLYMER WHICH DISSIPATES IMPACT ENERGY

MATERIAL: ALUMINUM 6082 / HIGH DENSITY POLYMER / STEEL BOLT





## ENGINE CASE SAVERS







COLORS

ENGINE CASE SAVERS

27



MACHINED FROM BILLET ALUMINUM

HIGH RESISTANCE TO ABRASION — MUCH HIGHER THAN IN THE CASE OF CARBON FIBRE OR POLYAMIDE MATERIAL CASING



UNIQUE DESIGN MATCHING THE MOTORCYCLE STYLE

DEEP-SET SCREWS ENABLING EASY REPLACEMENT OF THE CASING EVEN AFTER A MOTORCYCLE SLIDE

USED BY LEADING RACING TEAMS OF EUROPE AND THE U.S. IN ENDURANCE, IDM, AND CCS RACE SERIES

MATERIAL: ALUMINUM 6082 / STAINLESS STEEL BOLT



## DUCATI CLUTCH COVER





STRUCTURAL ELEMENT IN ALUMINUM  
MACHINED FROM BILLET / 3D MACHINING

SEE-THROUGH POLYCARBONATE WINDOWPANE  
ALLOWING TO SEE THE CLUTCH OPERATIONS



MILLED HOLES FOR PROPER DRY CLUTCH COOLING

LIGHTER THAN THE ORIGINAL CASING

MATERIAL: ALUMINUM 6082 / STAINLESS STEEL BOLT

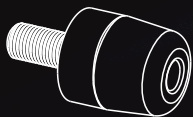
COLORS



DUCATI CLUTCH COVER

29





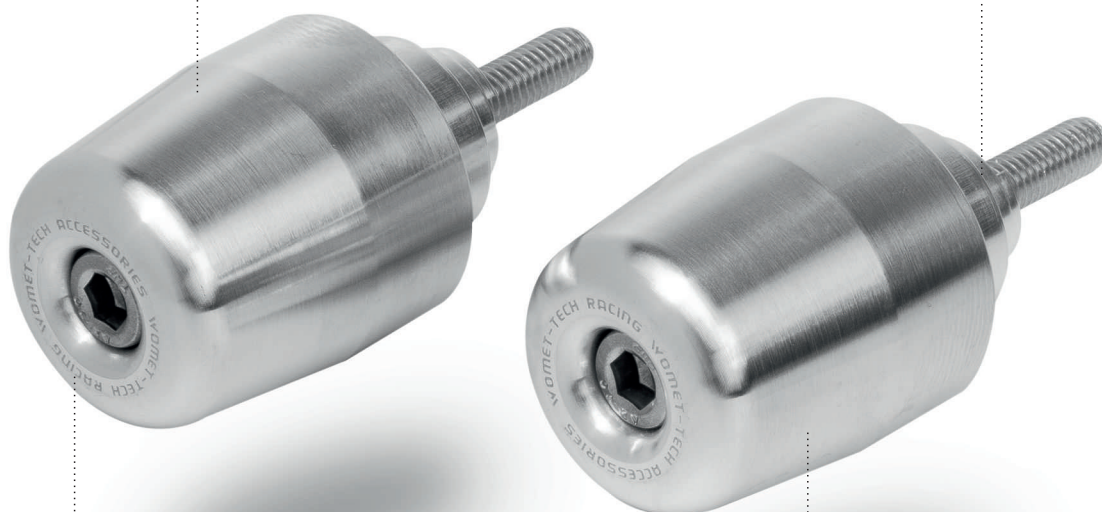
## BAR ENDS STREET



APPROXIMATE WEIGHT 150 G

AVAILABLE ALSO IN VERSION WITH UNIVERSAL EXPANSION  
FASTENING 13-14MM AND 17-18MM DIAMETER

COLORS



EASY AND PRECISE.  
DO NOT REQUIRE ANY MODIFICATION.

MACHINED FROM BILLET ALUMINUM

BAR ENDS

31



MATERIAL: ALUMINUM 6082 / STAINLESS STEEL BOLT



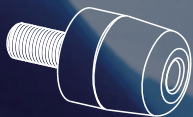
ca c'est fait











## BAR ENDS RACE





MACHINED FROM BILLET ALUMINUM

AVAILABLE ALSO IN VERSION WITH UNIVERSAL EXPANSION  
FASTENING 13-14MM AND 17-18MM DIAMETER

COLORS



APPROXIMATE WEIGHT 130 G

EASY AND PRECISE.  
DO NOT REQUIRE ANY MODIFICATION.

MADE OF SPECIAL HIGH-DENSITY  
POLYMER WHICH DISSIPATES IMPACT ENERGY

BAR ENDS

35



MATERIAL: ALUMINUM 6082 / HIGH DENSITY POLYMER / STAINLESS STEEL BOLT



## SWINGARM SPOOLS PADDOCK



EASY AND PRECISE.  
DO NOT REQUIRE ANY MODIFICATION.

MOUNTED TO OEM HOLES IN THE  
REAR SWING ARM

APPROXIMATE WEIGHT 100 G

SERVE AS ADAPTERS FOR MOTORCYCLE PADDOCK STAND

MACHINED FROM BILLET ALUMINUM

RECOMMENDED AS TUNING ELEMENTS  
DUE TO THE STRIKING DESIGN

COLORS



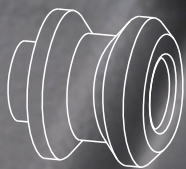
SWINGARM SPOOL SLIDERS

37



MATERIAL: ALUMINUM 6082 / STAINLESS STEEL BOLT





## SWINGARM SPOOLS ENDURANCE



COLORS



SWINGARM SPOOL SLIDERS

39



MOUNTED TO OEM HOLES IN THE  
REAR SWING ARM

APPROXIMATE WEIGHT 130 G

ENSURE REAR AXLE PROTECTION



EASY AND PRECISE.  
DO NOT REQUIRE ANY MODIFICATION.

SERVE AS ADAPTERS FOR MOTORCYCLE PADDOCK STAND

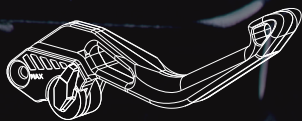


RECOMMENDED AS TUNING ELEMENTS  
DUE TO THE STRIKING DESIGN

MADE OF SPECIAL HIGH-DENSITY  
POLYMER USING CNC TECHNOLOGY

MATERIAL: HIGH DENSITY POLYMER / STAINLESS STEEL BOLT





## CLUTCH/BRAKE LEVERS





## // LONG LEVERS

HIGHEST QUALITY LEVER SET IMPROVING ERGONOMICS  
AND PROVIDING THE MOTORCYCLE WITH A UNIQUE STYLE

STRUCTURAL ELEMENT IN ALUMINUM MACHINED  
FROM BILLET / 3D MACHINING

COLORS



CLUTCH/BRAKE LEVERS

41



OFFER AVAILABLE FOR OVER  
300 MOTORCYCLES MODELS

6-POINT ADJUSTER

REGISTERED DESIGN



MATERIAL: ALUMINUM 6061 / STAINLESS STEEL BOLT

## // SHORT LEVERS

HIGHEST QUALITY LEVER SET IMPROVING ERGONOMICS  
AND PROVIDING THE MOTORCYCLE WITH A UNIQUE STYLE

STRUCTURAL ELEMENT IN ALUMINUM MACHINED  
FROM BILLET / 3D MACHINING

COLORS



OFFER AVAILABLE FOR OVER  
300 MOTORCYCLES MODELS

OPTION OF PERSONALISING THE DISTANCE  
ADJUSTER COLOR

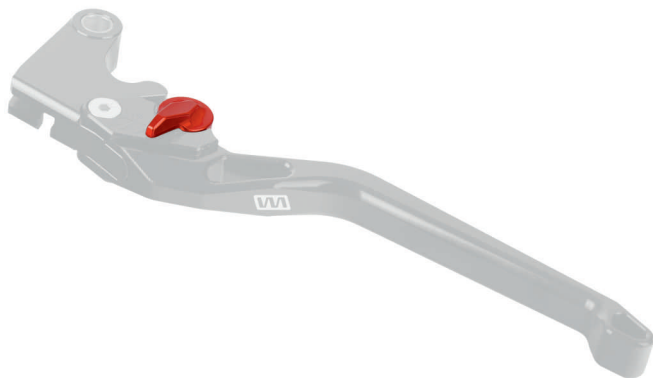
REGISTERED DESIGN

MATERIAL: ALUMINUM 6061 / STAINLESS STEEL BOLT



## // SPARE PARTS

LEVER ADJUSTER



COLORS



LEVER CLUTCH / BRAKE



COLORS



LEVER FULCRUM



COLORS





OHLINS

WILSTER  
EvoSpec

VOMET-TECH

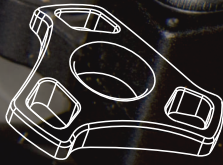
PCS

129  
TST  
INDUSTRIES









## FORK PRELOAD ADJUSTERS





MACHINED FROM BILLET ALUMINUM

SHAPE ENSURES EASY ADJUSTMENT EVEN IN GLOVES



EASY ASSEMBLY WITH AN ALLEN KEY

COLORS



FORK PRELOAD ADJUSTERS

47



MATERIAL: ALUMINUM 6082 / STAINLESS STEEL BOLT



## CLIP-ON HANDLEBARS





COLORS



STRUCTURAL ELEMENT IN ALUMINUM MACHINED FROM BILLET

HANDLEBARS FINISHED WITH ELEMENTS  
MADE OF HIGH-DENSITY POLYMER

IMPROVE DRIVE FEATURES  
IN RACE CONDITIONS

HINGE ALLOWING QUICK REPLACEMENT OF FASTENING  
WITHOUT THE NECESSITY OF PLATE DISASSEMBLY

OPTION OF QUICK HANDLEBAR REPLACEMENT

CLIP-ON HANDLEBARS

49



AVAILABLE ALSO IN A SPECIAL VERSION FOR OHLINS 0° INCLINATION ANGLE SUSPENSION, DESIGNED FOR THE NEEDS OF LONG-DISTANCE ENDURANCE RACE SERIES

MATERIAL: ALUMINUM 7075 / HIGH DENSITY POLYMER / STAINLESS STEEL BOLT



## FUEL TANK CAPS







COLORS

FUEL TANK CAPS

51



STRUCTURAL ELEMENT IN ALUMINUM MACHINED FROM BILLET

FAST OPENING SYSTEM

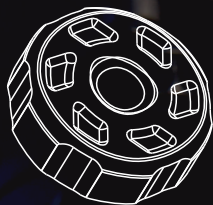


INTENDED ONLY FOR TRACK USE

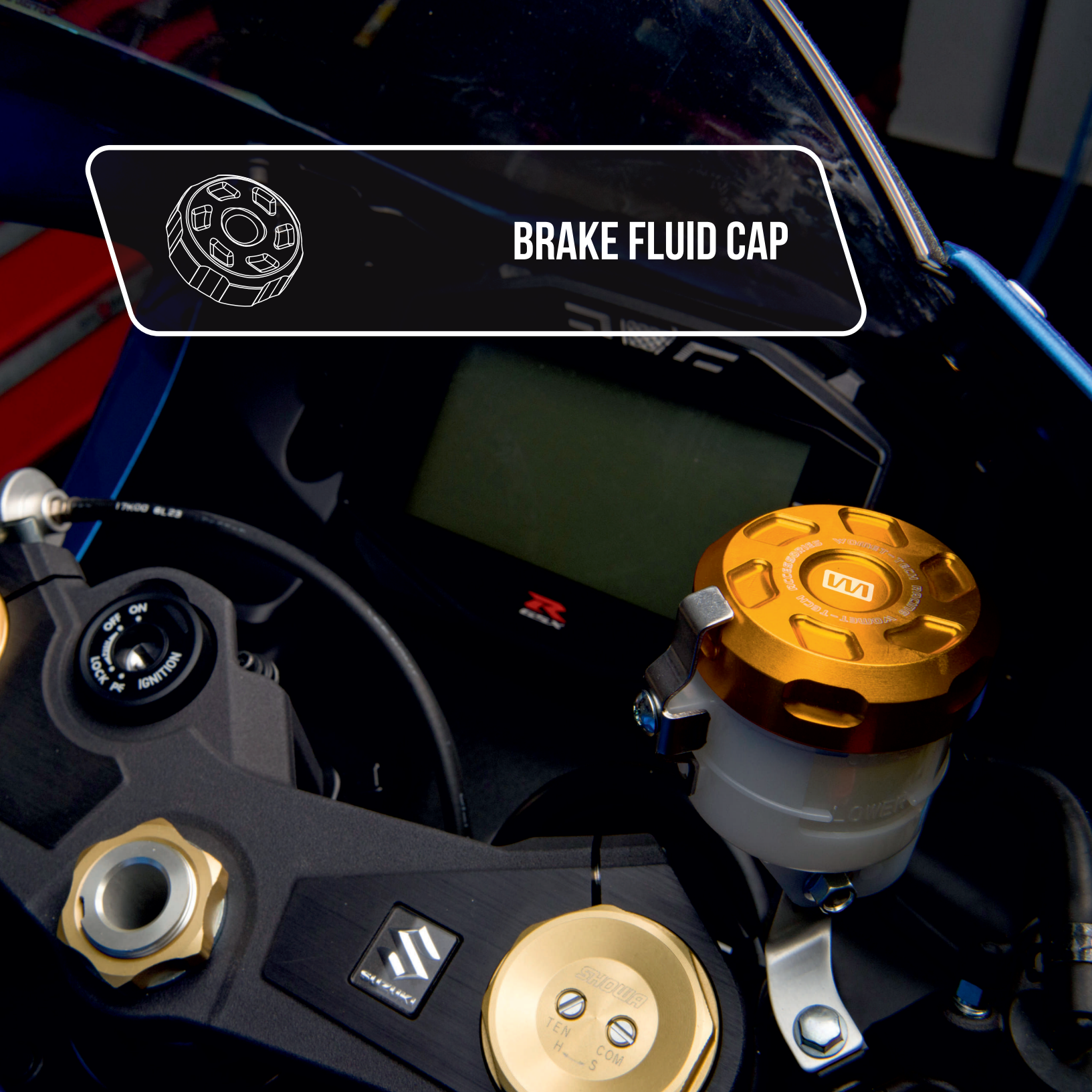
PURGING AIR VALVE ELIMINATES  
FUEL TANK PRESSURE ISSUES

IMPROVING MOTORCYCLE APPEARANCE  
WHILE RETAINING FUNCTIONALITY

MATERIAL: ALUMINUM 6061 / STAINLESS STEEL BOLT



## BRAKE FLUID CAP





MACHINED FROM BILLET ALUMINUM

IMPROVING MOTORCYCLE APPEARANCE  
WHILE RETAINING FUNCTIONALITY

COLORS



EASY ASSEMBLY

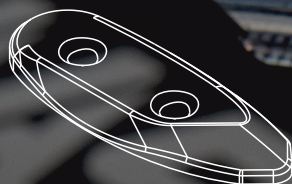
UNIQUE DESIGN

BRAKE FLUID CAPS

53



MATERIAL: ALUMINUM 6082



## MIRROR COVERS





COLORS



MIRROR COVERS

55



MACHINED FROM BILLET ALUMINUM

EASY ASSEMBLY

UNIQUE DESIGN



INTENDED ONLY FOR TRACK USE

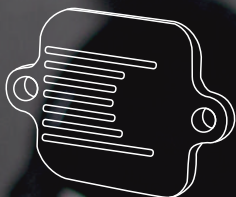
MOUNTED TO STANDARD HOLES

MATERIAL: LUMINUM 6082 / STAINLESS STEEL BOLT







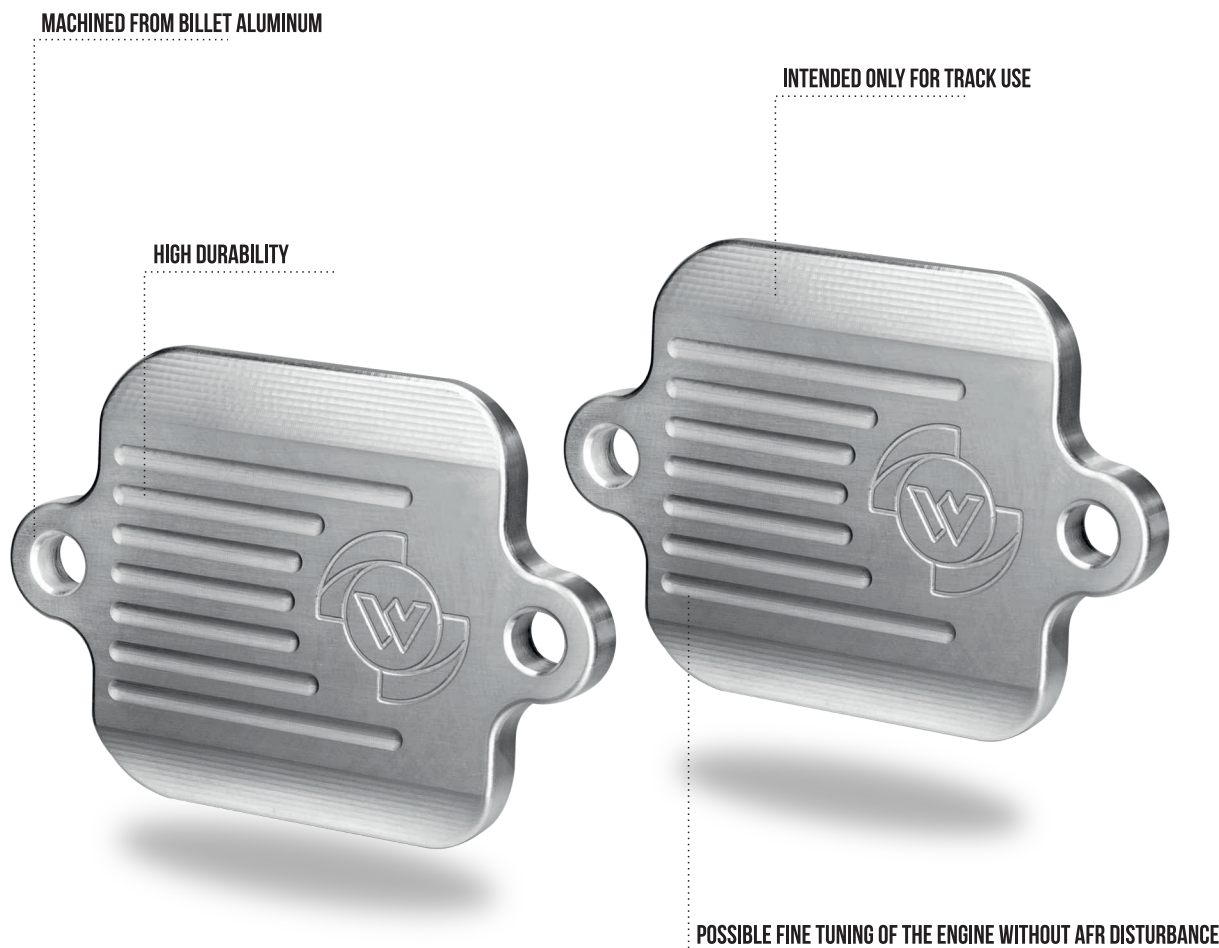


## SMOG BLOCK OFF PLATES





COLORS

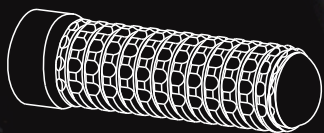


SMOG BLOCK OFF PLATES

59



MATERIAL: ALUMINUM 6082



**FOOT PEG**



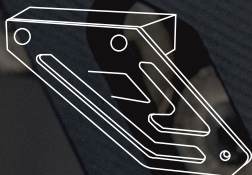




COLORS







TOE GUARD





COLORS



STRUCTURAL ELEMENT IN ALUMINUM  
MACHINED FROM BILLET

PROTECT FEET FROM INJURIES

RECOMMENDED FOR RACE MOTORCYCLES

REQUIRED BY CERTAIN RACE ORGANISATIONS

TOE GUARD

63



MATERIAL: ALUMINUM 6082 / STAINLESS STEEL BOLT



## OIL FILLER CAPS





SECURE WITH ALLEN WRENCH  
TO PREVENT THEFT

ASSEMBLY DOES NOT REQUIRE ANY  
MODIFICATION OF THE MOTORCYCLE

MACHINED FROM BILLET ALUMINUM

SECURITY SYSTEM FOR TRACK.  
WIRE IS NOT SUPPLIED.

SPECIFIC FOR EACH  
MOTORCYCLE BRAND.

THE SET INCLUDES A SEALING O-RING

MATERIAL: ALUMINUM 6082

COLORS



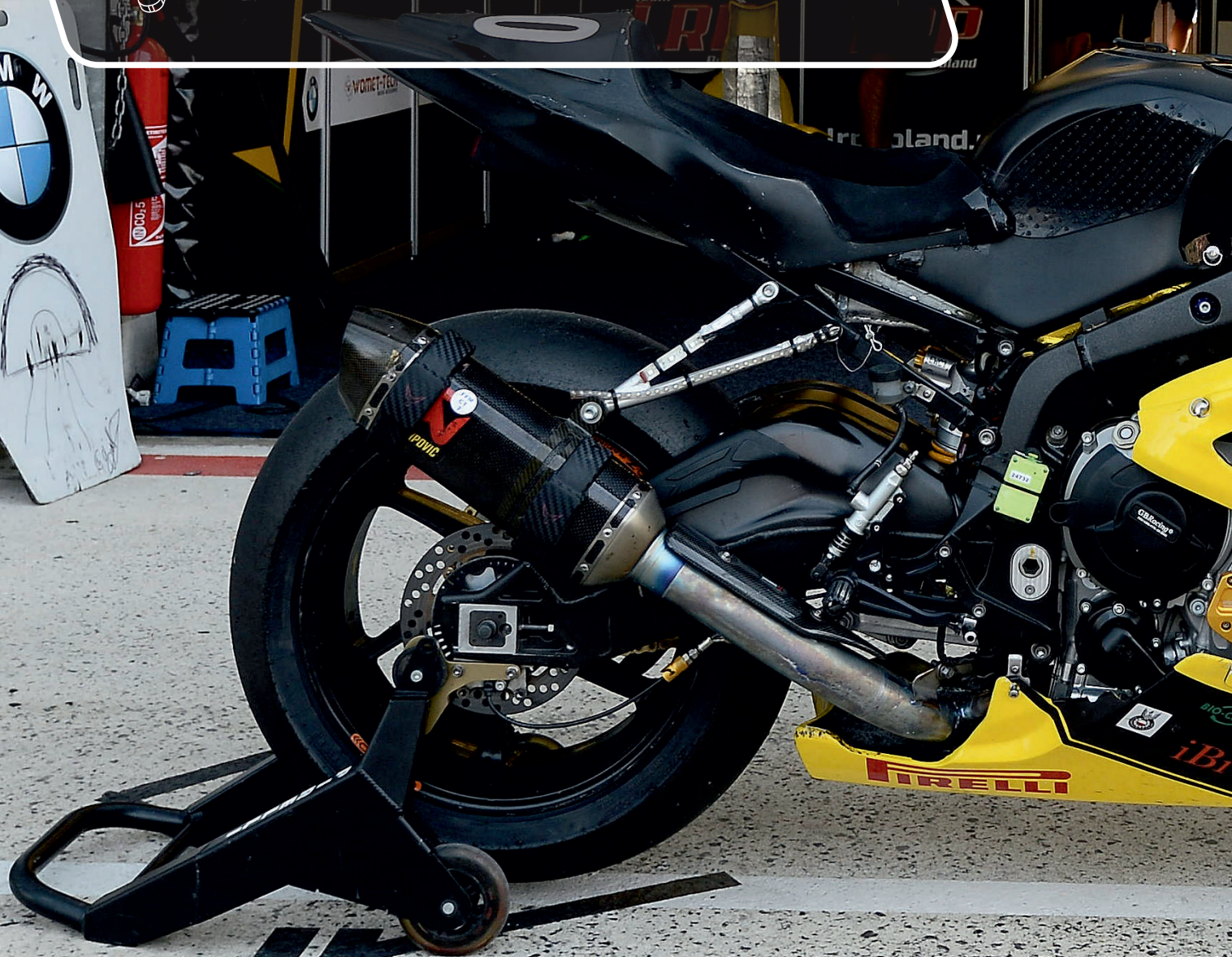
OIL FILLER CAPS

65





## SWING ARM LIFTER





COLORS



RECOMMENDED FOR RACE MOTORCYCLES

MACHINED FROM BILLET ALUMINUM

ENABLE TO LIFT THE REAR WHEEL SAFELY AND QUICKLY

WE TEAMED UP WITH OUR FRIENDS AT TST INDUSTRIES TO CREATE THESE HIGH QUALITY COMPONENTS

MATERIAL: ALUMINUM 6082 / HIGH DENSITY POLYMER / STAINLESS STEEL BOLT

SWING ARM LIFTER

67













#### LEGAL NOTICE

WOMET.TECH HAS NO CONNECTION WITH APRILIA<sup>®</sup>, BMW<sup>®</sup>, CAGIVA<sup>®</sup>, DUCATI<sup>®</sup>, HONDA<sup>®</sup>, KAWASAKI<sup>®</sup>, MOTO GUZZI<sup>®</sup>, MV AGUSTA<sup>®</sup>, SUZUKI<sup>®</sup>, TRIUMPH<sup>®</sup>, YAMAHA<sup>®</sup> AND/OR THEIR DEALERS. ALL ITEMS WITH TRADE MARK NAMES FOR MOTORCYCLES IDENTIFICATION ARE TO BE INTENDED ONLY AS A REFERENCE FOR THE USE IN OUR CATALOGUE AND ON OUR WEBSITE WOMET-TECH.COM. IF YOU WISH, YOU CAN REGISTER ON OUR WEBSITE FOR OUR NEWSLETTER, THIS WILL KEEP YOU INFORMED OF NEW PRODUCTS AND ANY SPECIAL PROMOTIONS. WOMET.TECH DENIES LIABILITY FOR ANY IMPROPER USE OF THE PRODUCT. IN ADDITION WOMET.TECH DENIES ANY RESPONSIBILITY FOR PHYSICAL OR MORAL DAMAGES AS WELL AS DAMAGES TO PROPERTY DUE TO WRONG USE OR ASSEMBLY. WOMET-TECH PRODUCTS ARE NOT HOMOLOGATED AND SO THEY CAN'T BE USED OUTSIDE PRIVATE AREAS, CIRCUIT OR EXHIBITIONS. WE SUGGEST YOU TO LOOK UP YOUR SPECIFIC ROAD REGULATIONS CONCERNING THE PRODUCTS BECAUSE SOME OF THESE COULD BE SUBJECT TO RESTRICTIONS.



// WOMET-TECH  
// UL. GALICYJSKA 108 // 32-447 SIEPRAW // POLAND

// WWW.WOMET-TECH.PL // +48 12 350 41 05  
/EN/ SALES@WOMET-TECH.COM /PL/ BIURO@WOMET-TECH.PL